

Global Studies Bell Work Quarter 3, Week 9

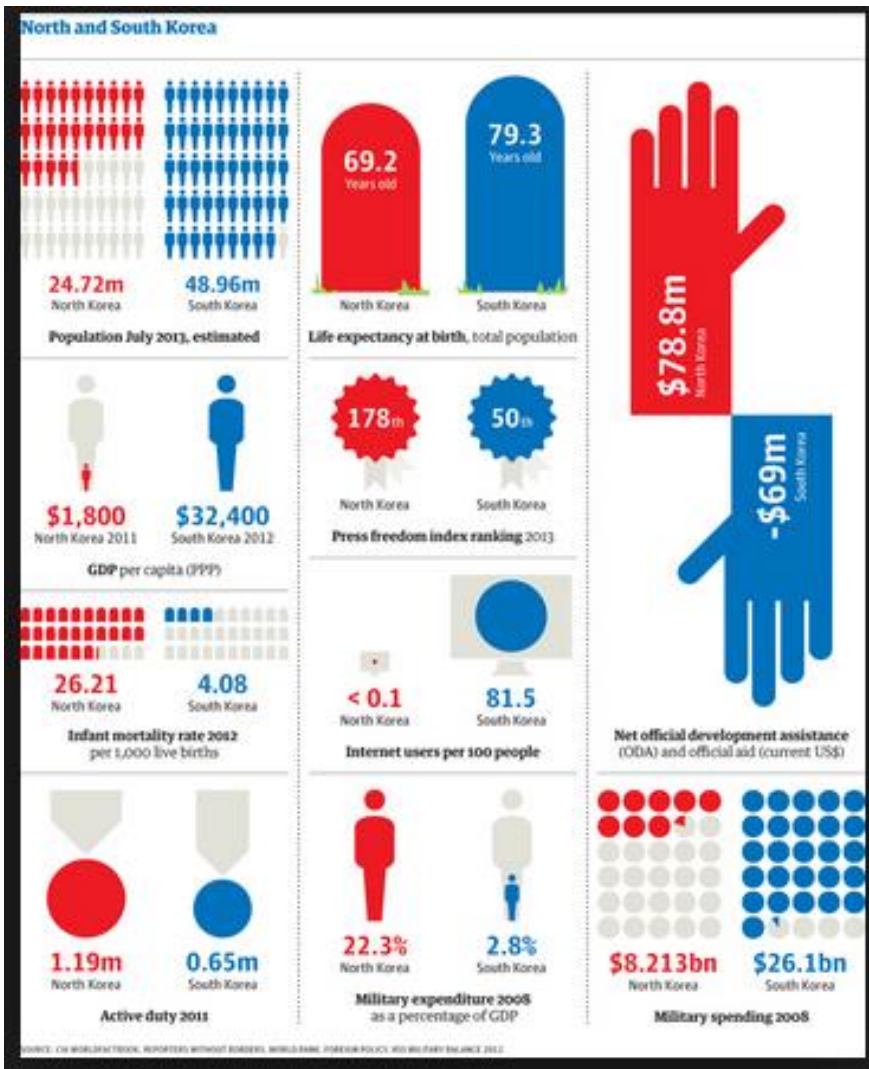
Name: _____ Period: _____

Monday – Last Week Review

1. What is North and South Korea separated by?
 2. Who is Kim Il'Sung?
 3. How is South Korea's Economy different from North Korea's? Who's economy is more successful?
 4. What Type of government does North Korea have?
 5. What Type of government does South Korea have?
-


Tuesday – Analyzing Graphics

Use the map to answer the questions.



1. Which country has a larger population?
2. According to this graphic how much official aid does North Korea receive in developmental assistance?
3. How much does South Korea receive?
4. Analyze the information, then write a statement drawing a connection between each country's economy, population and military.

Wednesday – Word of the Week

| | |
|--|--------------------------------|
| Definition: | Examples of people or regions: |
|  | |
| Use it in a sentence: | Image: |

Thursday – Reading Comprehension

Analyze the text answer the questions.

1. What is Setsubun? When is it celebrated?
2. What is Setsubun's purpose?
3. What must you do to get good luck and health?

せつぶん- Setsubun

February is the last month of winter in Japan and the festival of **Setsubun** せつぶん marks the end of winter and welcomes the arrival of spring. Setsubun せつぶん also signifies the day on which any evil spirits that might be lurking are chased away to ensure a fortunate year. This is done by tossing roasted beans here, there and everywhere.

An important aspect of this ritual is that the person who does the bean throwing is the "Toshi otoko としおとこ" the "man of the year." This connects to the juunishi じゅうにし animals...mouse, cow, tiger etc...anyone born in the animal of the year is the one who throws the beans.

It is also said that if you pick up and eat the same number of beans as your age, you will have good luck and health for the next year!

Friday Flashback

1. Explain how **push** factors impact global migration. Then provide one **SPECIFIC** example of a push factor.
2. Explain how **pull** factors impact global migration. Then provide one **SPECIFIC** example of a pull factor

